



# Project 1212 FitNation

A B Abruzzo Bodziak  
A Architects



# Project 1212

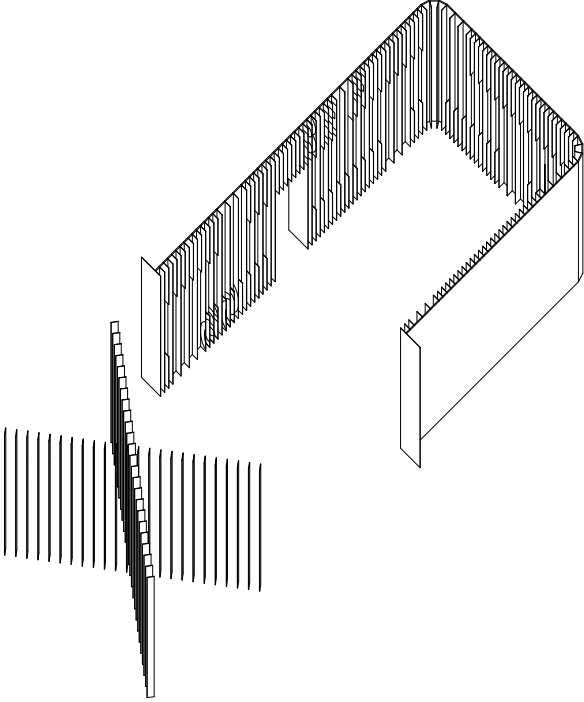
## FitNation

A B Abruzzo Bodziak  
A Architects





# Project Details



Project 1212  
FitNation

Client: AIA New York, The Center for  
Architecture

Program: Exhibition

Location: New York, NY, USA

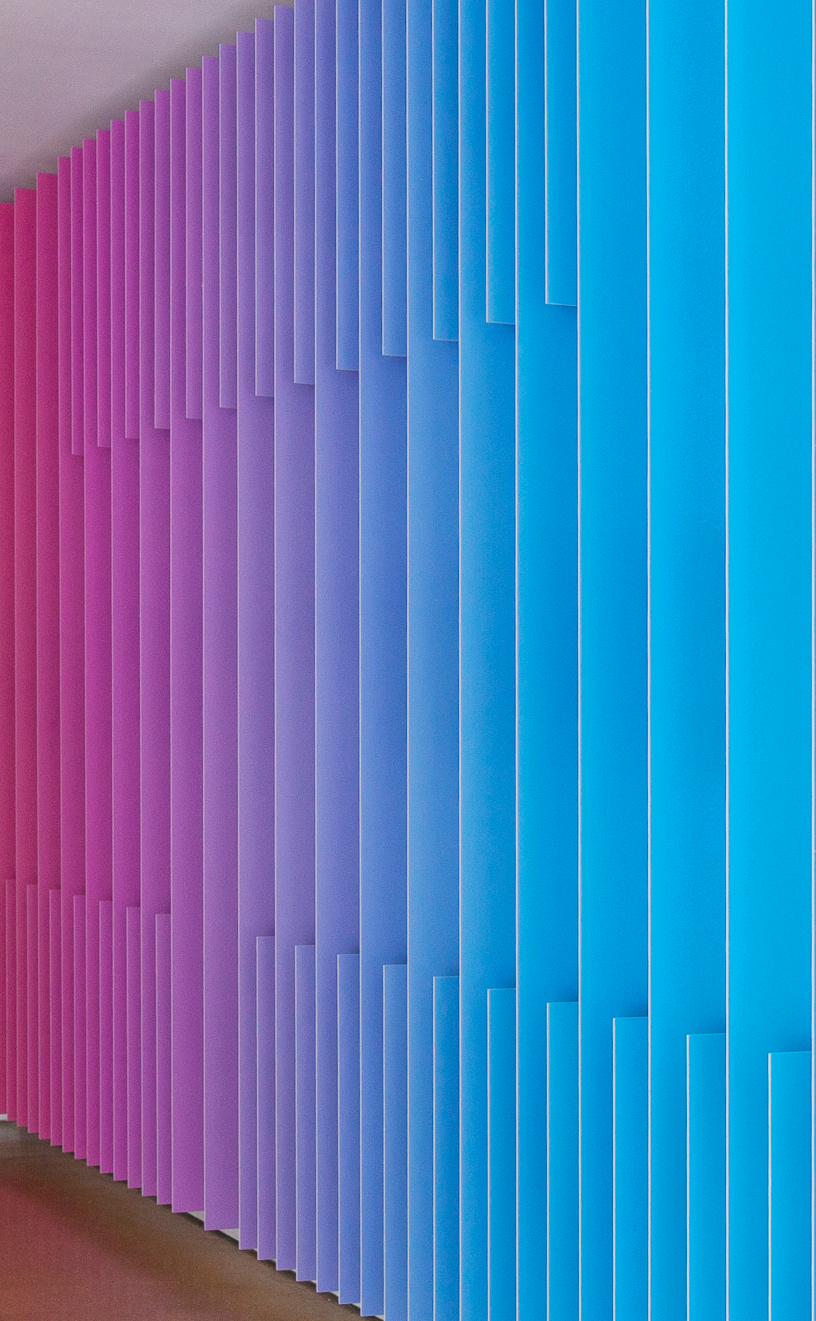
Dimensions: 1,812 SF

Collaborators: Pentagram (Graphic  
Design), Tim Pearson (Contractor)

Status: Complete, 2012



# Project Description



## Project 1212 FitNation

ABA is the curator and designer of FitNation, a traveling exhibit on active design efforts across the United States presenting projects that exemplify architectural means, policy-driven and grassroots action, conceptual frameworks, and simple improvements which contribute to a healthier lifestyle for individuals and communities.

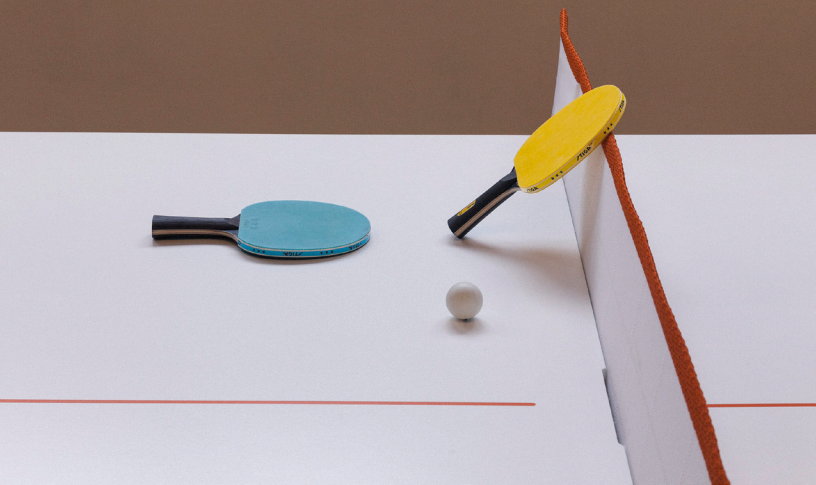
Creating an energetic environment that maintains open space for the Center's many events, the exhibit design utilizes wall-mounted and hanging strips of color to create a unifying architecture that, though in a fixed state, encourages movement. Hypertext messages and color gradients are revealed as one moves through the exhibition, and the

exemplary projects, displayed parallel to the walls and thus seen between the lenticular fins, are viewed one or two at a time, encouraging exploration of the entire display circuit.

The installation maximizes the use of printing technologies for simple and fast fabrication, using one of two kinds of printed material for each of the 330 wall boards and 181 fins. The projects that make up the majority of the exhibition are laid out in a vertical tripartite grid of 11x17's to allow ease of printing and re-installation at other galleries across the United States. The rhythm of the fin placement is tied into this module, placed every five and a half inches apart above and below the images and text; the grid erodes in certain areas according to the shifting content, giving relief to the system.

The large hypertext "FIT" in the





front window shifts as does the viewer:  
its x-shape configuration allows the  
word to be viewed from various points,  
solidifying upon one's approach to  
the Center, and dematerializing when  
viewed from other angles. This creates  
an installation that at once fills the  
upper void of the Center's double-  
height storefront, while permitting views

through to the activities therein. Semi-reflective wall coverings on either side of the hanging panels bring the light and movement of the street into the gallery as they multiply the colorful elements' appearance.

PROJECT CONNECTIVITY INITIATIVE

## Resurrection an elevated station



Resurrection Station is a new transit station in downtown Chicago, Illinois, designed by Skidmore, OWINGS & Merrill LLP. The station is a prime example of the firm's commitment to sustainable design and community engagement. The station's design features a prominent blue and white canopy that provides shade and shelter for passengers. The station is also a prime example of the firm's commitment to sustainable design and community engagement. The station's design features a prominent blue and white canopy that provides shade and shelter for passengers. The station is also a prime example of the firm's commitment to sustainable design and community engagement.

CONNECTIVITY DESIGN

## Transportation reinvigorated and bringing



The project is a prime example of the firm's commitment to sustainable design and community engagement. The project's design features a prominent blue and white canopy that provides shade and shelter for passengers. The project is also a prime example of the firm's commitment to sustainable design and community engagement. The project's design features a prominent blue and white canopy that provides shade and shelter for passengers.



STATION

STATION

STATION



# Project Documentation



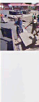
City and student engage kinetic experie



Engaging circula: interface between culture a pedestri



Barn raise in reverse



Community specific pa: doubles as world class skating fac



Healthy and refreshing at one cent per gallon



Re-tooled parking garage serves pedestrians, cyclists



International relations: students meet, collaborate, climb



International relations: students meet, collaborate, climb



International relations: students meet, collaborate, climb



International relations: students meet, collaborate, climb



# FitNation

**Towards a Fit Nation**

Architecture is now part of the national discussion on the ability and choices citizens experience in the United States. Through active design, architectural changes to our cities, towns, and neighborhoods can encourage physical activity as a part of everyday life, establish healthier routines, and promote exemplary design.

FitNation highlights strategies that make the built environment more conducive to healthier lifestyles. Encouraging users for walking or biking to work, incorporating bike parking, and providing secure bike racks are examples of ways that architecture can encourage responsible transportation and creating walking spaces and engaging environments.

With efforts such as New York City's Active Design Collaborative program, the City Planning, Transportation, Health, Design, and Construction have joined together to support one another and improve neighborhood health, and other designers can be part of the solution to some of today's most pressing public health challenges.

FitNation presents projects, both local and national, that exemplify architectural, urban, policy-driven and geographic action, conceptual frameworks, and simple improvements which contribute to a healthier design for individuals and communities.

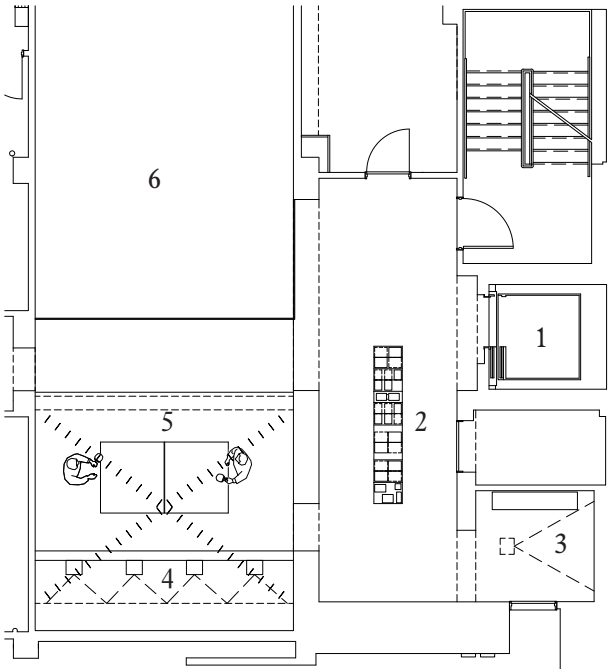
© 2012 American Institute of Architects  
 All rights reserved. No part of this publication may be reproduced, stored in a retrieval system, or transmitted, in any form or by any means, electronic, mechanical, photocopying, recording, or by any information storage and retrieval system, without the prior written permission of the American Institute of Architects.  
 For more information, visit [www.fitnation.org](http://www.fitnation.org)  
 AIA  
 FIT NATION  
 AMERICAN INSTITUTE OF ARCHITECTS





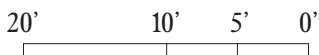




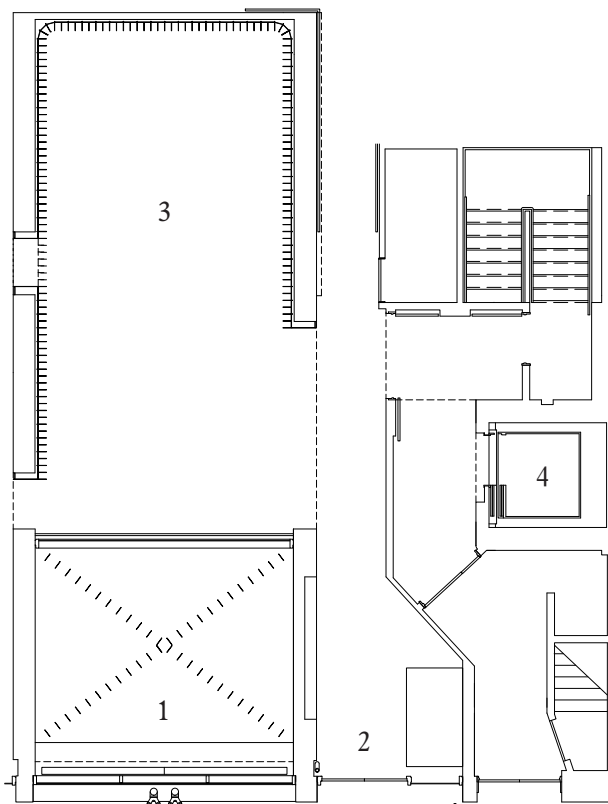


Key:

1. Elevator
2. Book Display
3. Video Room
4. Video Projection
5. Table Tennis
6. Double Height Space

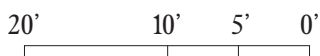


Mezzanine Floor Plan

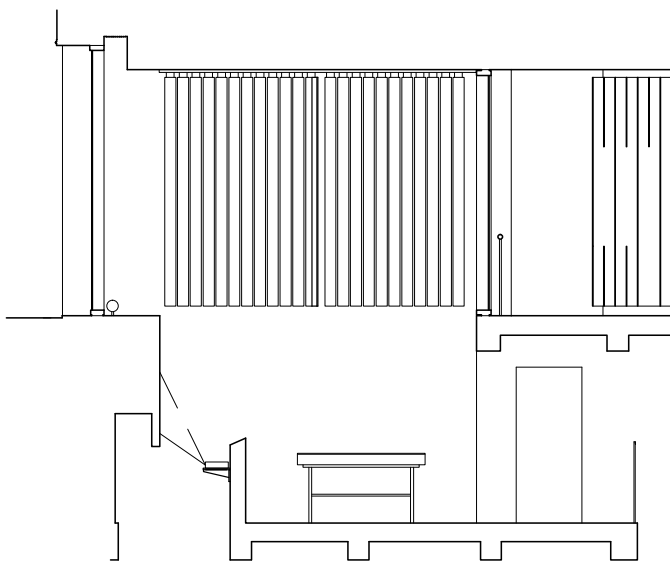


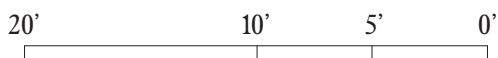
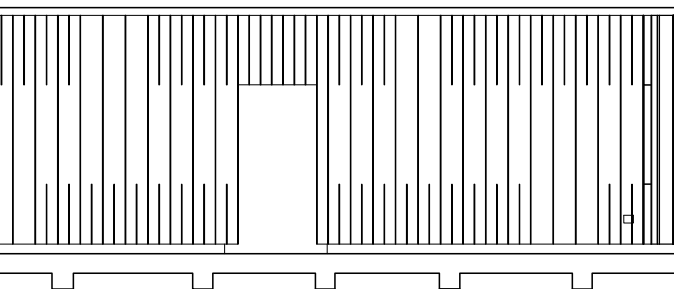
Key:

1. Street Front Exhibition Display
2. Entry
3. Projects
4. Elevator



First Floor Plan

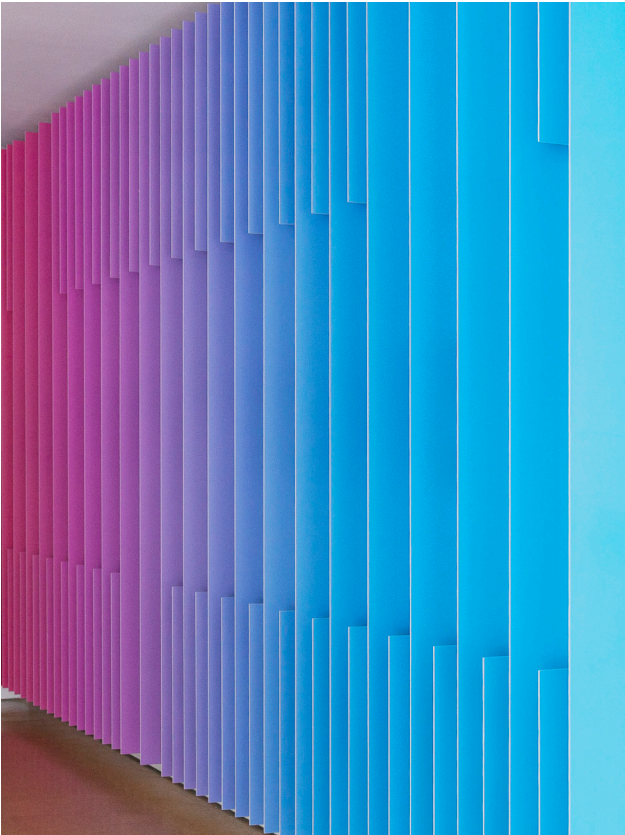




Section

25

A B A

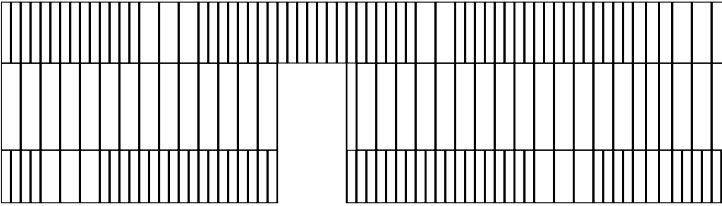






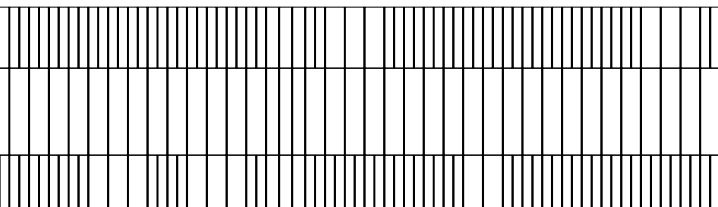
Cyan

Yellow

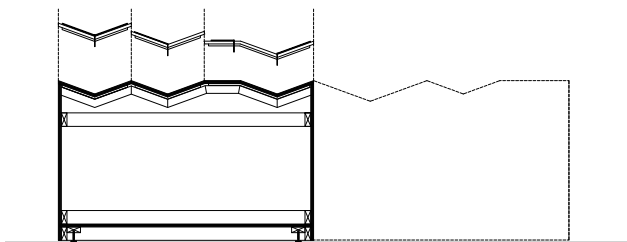
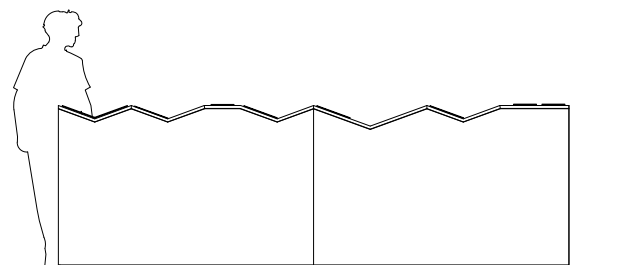


Magenta

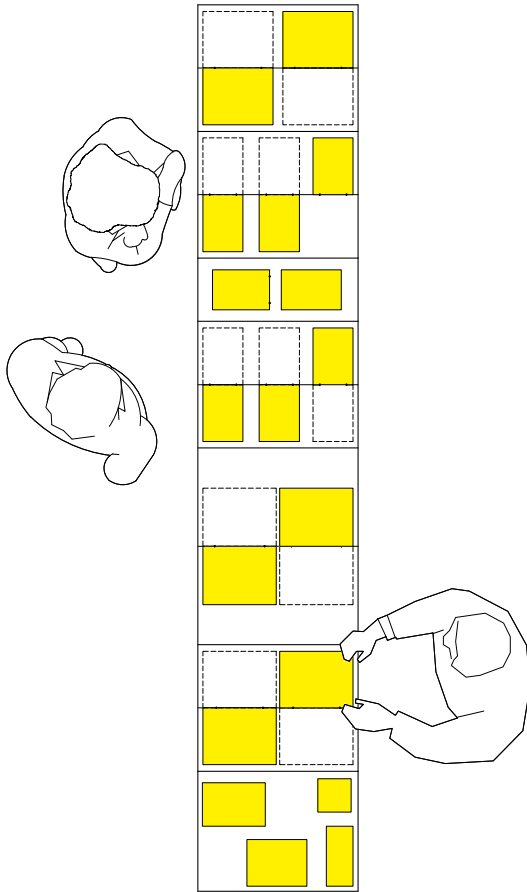
Cyan



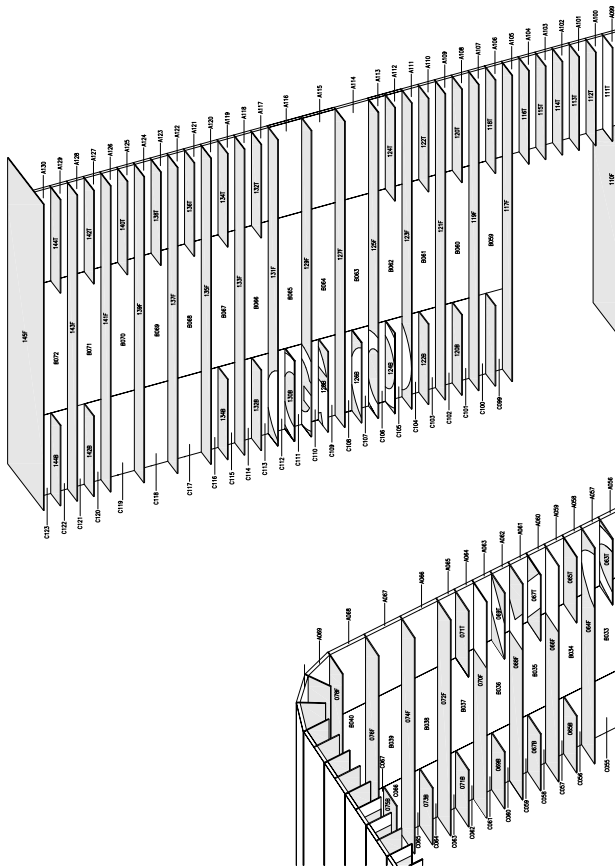
Diagrammatic Chromatic Unfolded  
Elevation

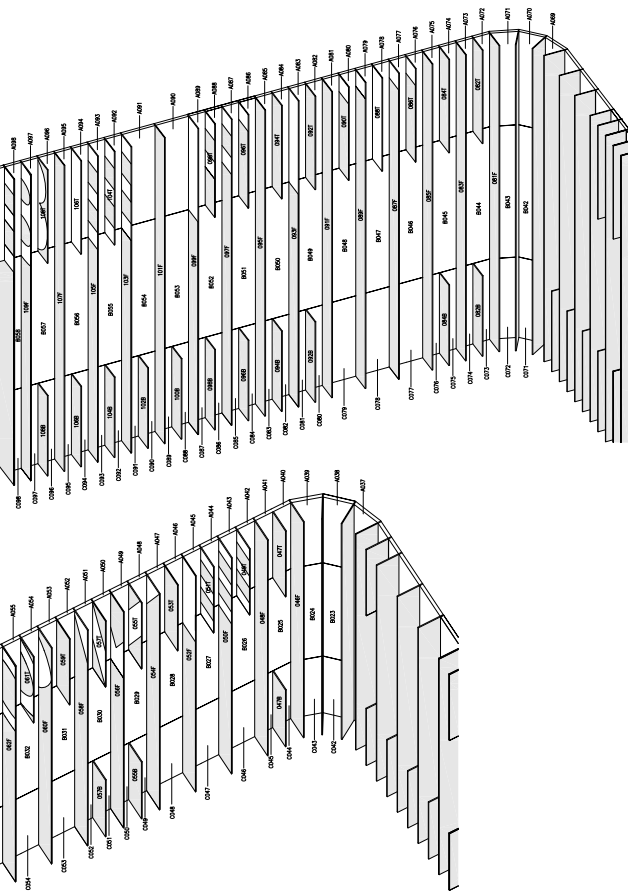


## Book Display Table Elevation and Section

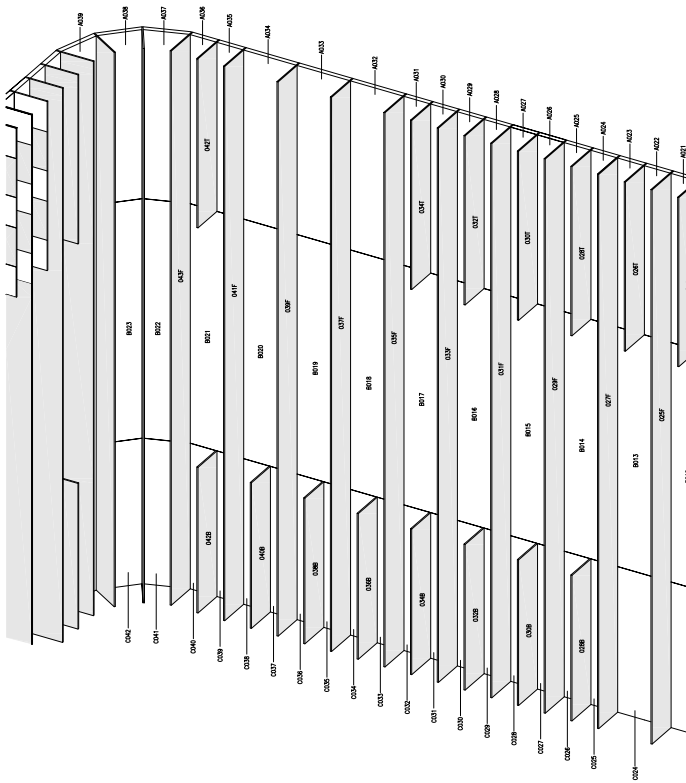


Book Display Table Plan



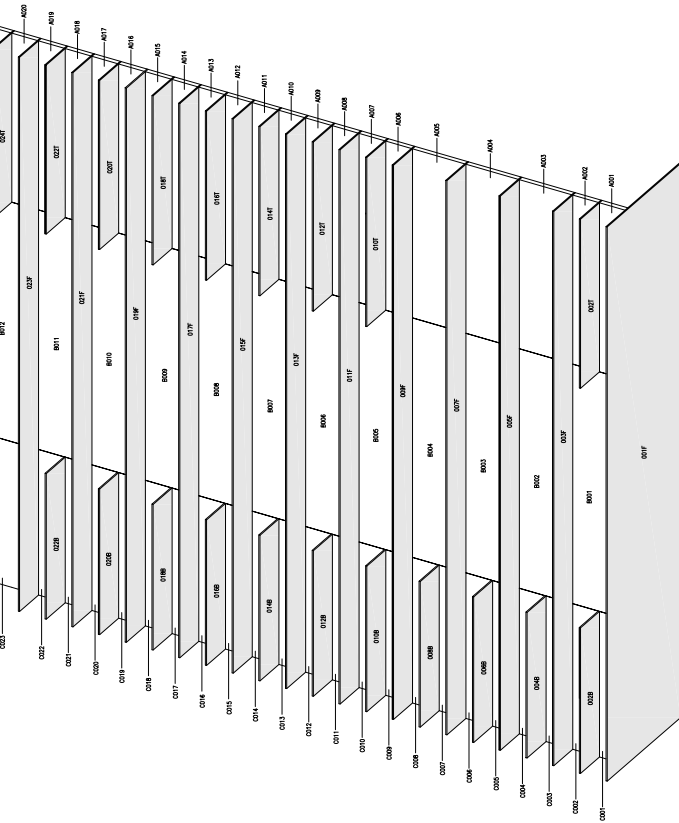


## Fin and Panel Layout Isometric Drawings

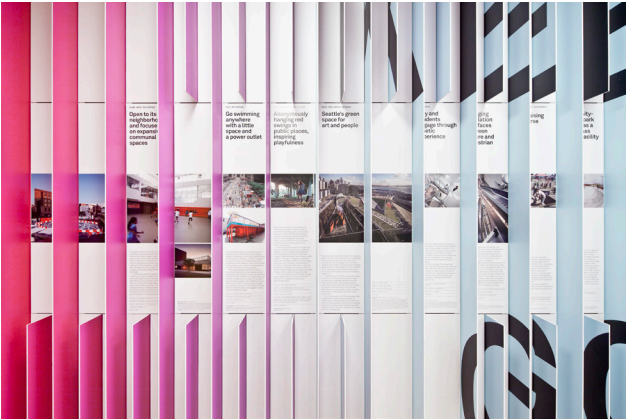


## Fin and Panel Layout Isometric Drawings



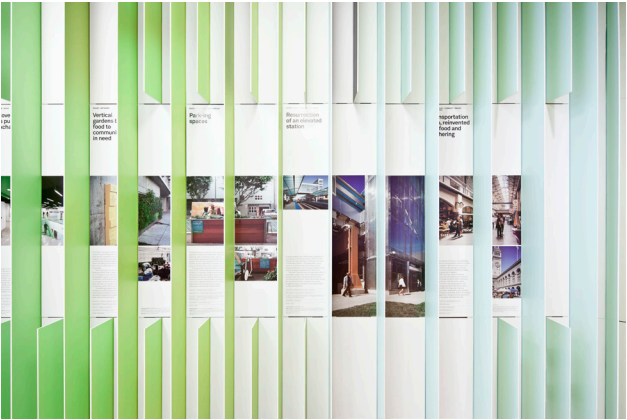


























**Riverbank  
as linear  
park, cultural  
connector**



Text describing the riverbank project as a linear park and cultural connector.

**Shipping pier  
reconceived for  
recreation and  
contemplation**



Text describing the shipping pier project as a space for recreation and contemplation.

**Sidewalk  
life of cross-  
sectional  
interactions**

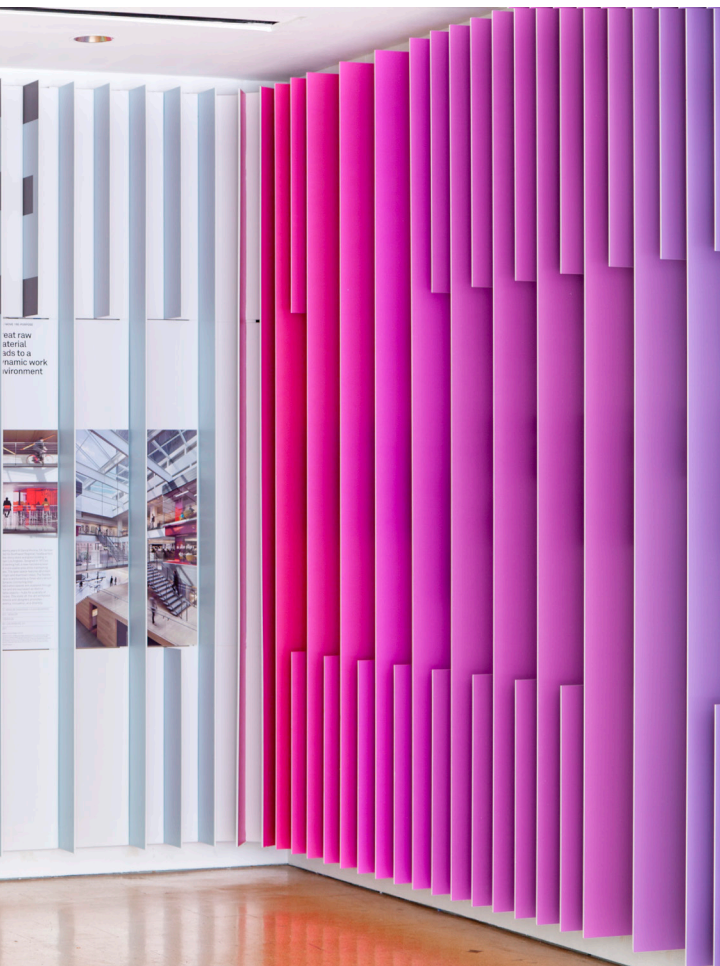


Text describing the sidewalk project as a space for cross-sectional interactions.

**Urbanism in  
microcosm**



Text describing the urbanism project as a microcosm of urban life.





















# Information



## Abruzzo Bodziak

Abruzzo Bodziak Architects is an award-winning New York-based practice with experience ranging from civic and cultural projects to homes, exhibitions, and research-based initiatives. A thought leader in the field, the firm's work is rooted in experience and is defined by an innovative approach to contextuality, relentless focus on detail, and aesthetic achievement with a strong conceptual viewpoint.

Established by Emily Abruzzo and Gerald Bodziak, ABA has been recognized by the Architectural League of New York (the 2010 Architectural League Prize for Young Architects and Designers), the AIA (New Practices New York 2012 and a 2013 AIA New York Design Award), *Wallpaper Magazine* (Architects Directory 2013: "The world's





KARB

Journal of Landscape Architecture

2013

UNCHARTED TERRITORIES

21

GROWING URBAN HABITATS

GROWING

Growing Urban Habitats documents and expands on Urban Habitats, an international design

3.11/After

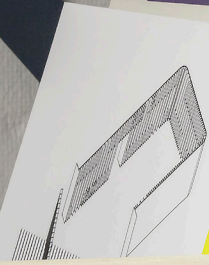
記憶と再生へのプロセス

五十嵐太郎 (著)

MAGIC

Young Architects 12: Resource

編者  
責任者



1  
2  
1  
2





best young practices”), *Architectural Record* (2016 Design Vanguard), and the New York City DDC (Design + Construction Excellence Program).

The office’s work has been featured in international publications such as *Architectural Record*, *Wired*, *Fast Company*, *FRAME*, *Domus*, *PIN-UP*, *Baumeister*, and *Cultured*, and has been exhibited by institutions such as Exit Art, Japan Foundation, Storefront for Art and Architecture, The Boston Society of Architects, and as part of The New Museum Festival of Ideas, with the Audi Urban Future Initiative.

Emily Abruzzo, AIA, LEED AP, NCARB is a Founding Partner of ABA. She received her Bachelor of Arts from Columbia College and her Master of Architecture from Princeton University, where she also received a Certificate in Media and Modernity and was named a Fellow at The Center for Arts and Cultural Policy Studies. Currently a Critic at the Yale School of Architecture, Emily is a founding editor and publisher of 306090 Books, and a 2014 MacDowell Fellow. She is a citizen of both the United States and Italy.

Gerald Bodziak, AIA, LEED AP, NCARB is a Founding Partner of ABA. He received his Bachelor of Science from the University of Michigan Taubman College of Architecture and Urban Planning and his Master of Architecture from Princeton University. Gerald is a Fellow of The Forum



and Institute for Urban Design, and has taught design and construction courses at numerous institutions including Columbia's Graduate School of Architecture, Planning, and Preservation. He is a citizen of the United States.



# Imprint

MOVE / RIDE / GRAZE / NETWORK

## Seattle's gre space for art and peop



Envisioned as a new urban model for a parks, Olympic Park is located on a former brownfield site sliced by train tracks as an arterial road. The design connects separate sites with an unobstructed green platform, descending hilly foot city to the water over existing infrastructure to reconnect the urban core to the new waterfront.

"Capitalizing on the forty-foot grade from the top of the site to the water's a continuous landscape wanders from city to the shoreline. The main pedestrian route descends as each leg of the path to radically different views of the Olympic Mountains, the train tracks, and the city before it descends to the water, a new beach.

As a landscape for art, the program varied park provides diverse settings a sculpture of multiple scales as it provides miles of walking paths, a new bike and trail, active programming including pilates Zumba classes, a farmers market, and concerts and dancing.



**PROJECT** OLYMPIC PARK  
**ARCHITECT** WEGMAN/FRANK  
**CLIENT** KENETRY ART MUSEUM  
**LOCATION** SEATTLE, WA  
**YEAR** 2007  
**DESCRIPTION** Olympic Park is a new urban model for a parks, located on a former brownfield site sliced by train tracks as an arterial road. The design connects separate sites with an unobstructed green platform, descending hilly foot city to the water over existing infrastructure to reconnect the urban core to the new waterfront. Capitalizing on the forty-foot grade from the top of the site to the water's a continuous landscape wanders from city to the shoreline. The main pedestrian route descends as each leg of the path to radically different views of the Olympic Mountains, the train tracks, and the city before it descends to the water, a new beach. As a landscape for art, the program varied park provides diverse settings a sculpture of multiple scales as it provides miles of walking paths, a new bike and trail, active programming including pilates Zumba classes, a farmers market, and concerts and dancing.

CLIMB / MOVE

## City and students engage through kinetic experience



New pedestrian bridges connect the campus plaza to the Wolfson Campus Student Support Center across a busy street in Miami, FL. An expansive ground floor atrium binds around the wide sidewalk and activates the street, providing academic spaces and an eating area for students and the public. The concrete building canopy provides welcome shade to draw people in.

On the interior, student life is organized vertically by a highly visible main open stair, the preferred path of travel. The connecting stairs are wide enough to enable student interaction and are suffused with natural light. Elevators located away from the main entrance and a wellness center on the top floor further encourage clear use.

**PROJECT** WOLFSON CAMPUS STUDENT SUPPORT CENTER  
**ARCHITECT** ZENKOWSKI ARCHITECTS  
**CLIENT** MIAMI DIXIE COLLEGE  
**LOCATION** MIAMI, FL  
**YEAR** 2012  
**DESCRIPTION** New pedestrian bridges connect the campus plaza to the Wolfson Campus Student Support Center across a busy street in Miami, FL. An expansive ground floor atrium binds around the wide sidewalk and activates the street, providing academic spaces and an eating area for students and the public. The concrete building canopy provides welcome shade to draw people in. On the interior, student life is organized vertically by a highly visible main open stair, the preferred path of travel. The connecting stairs are wide enough to enable student interaction and are suffused with natural light. Elevators located away from the main entrance and a wellness center on the top floor further encourage clear use.

AMB / MOVE

## Engaging interfaces between culture and pedestrian



The heart of downtown Cincinnati, the seventh Carter's ground floor transparency opens its urban surroundings, while the vertical sequence of galleries responds to a tight compact footprint, maximizing the opportunities for the museum to act as a vibrant public gathering space.

An uninterrupted pedestrian flow leads from a streetscape outside into the Carter's open-air public lobby, and to the galleries above. On a ground level, cuts in the floor invite visitors to lead visitors downwards to the lower level, as a performance space. An open shaft at the side of the building cuts through all six floors, connecting the city, the lobby and the galleries, both, while a zigzag ramp transport visitors to allow multiple views into the galleries, as well as out to the surrounding cityscape.

**CLIENT** PRESIDENTIAL CENTER FOR CONTEMPORARY ARTS  
**ARCHITECT** ZENKOWSKI ARCHITECTS  
**CLIENT** MARIANNE CLAY COLLECTION  
**LOCATION** CINCINNATI, OH  
**YEAR** 2015  
**DESCRIPTION** The heart of downtown Cincinnati, the seventh Carter's ground floor transparency opens its urban surroundings, while the vertical sequence of galleries responds to a tight compact footprint, maximizing the opportunities for the museum to act as a vibrant public gathering space. An uninterrupted pedestrian flow leads from a streetscape outside into the Carter's open-air public lobby, and to the galleries above. On a ground level, cuts in the floor invite visitors to lead visitors downwards to the lower level, as a performance space. An open shaft at the side of the building cuts through all six floors, connecting the city, the lobby and the galleries, both, while a zigzag ramp transport visitors to allow multiple views into the galleries, as well as out to the surrounding cityscape.

Y / GRAZE / GRASSROOTS /

## raising diverse



ties with schools, churches, and community organizations to do an extraordinary payment in hope for transformation. By helping with the repurposing of these green spaces, the community finance properly values and identifies, sustains labor in health of farms, with gardens. The cooperative removal of the site both an educational experience rarely event, and lower cost, makes off to, dehydrated, stored, shaded, use the pale prisoner sunlight and Dewey.

**CLIENT** PRIVATE SCHOOLS, CHURCHES, COMMUNITY ORGANIZATIONS  
**ARCHITECT** ZENKOWSKI ARCHITECTS  
**LOCATION** SEATTLE, WA  
**YEAR** 2007  
**DESCRIPTION** Olympic Park is a new urban model for a parks, located on a former brownfield site sliced by train tracks as an arterial road. The design connects separate sites with an unobstructed green platform, descending hilly foot city to the water over existing infrastructure to reconnect the urban core to the new waterfront. Capitalizing on the forty-foot grade from the top of the site to the water's a continuous landscape wanders from city to the shoreline. The main pedestrian route descends as each leg of the path to radically different views of the Olympic Mountains, the train tracks, and the city before it descends to the water, a new beach. As a landscape for art, the program varied park provides diverse settings a sculpture of multiple scales as it provides miles of walking paths, a new bike and trail, active programming including pilates Zumba classes, a farmers market, and concerts and dancing.

Project 1212  
FitNation

Publication:

04/18/17, Abruzzo Bodziak Architects  
68 Jay St. #414, Brooklyn NY, 11201  
(aba.nyc)

Photography:

Naho Kubota (nahokubota.com), ABA

Graphic Design:

Studio Lin (studiolin.org)

Printing:

Lulu (lulu.com)

Copyright:

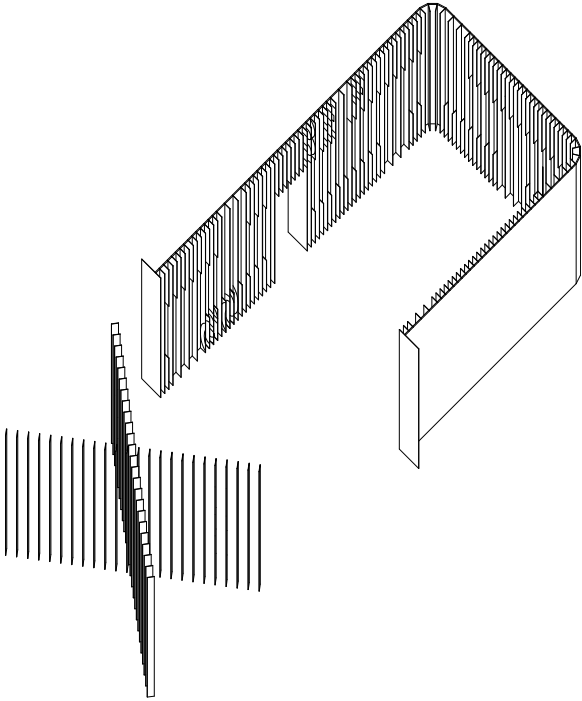
ABA unless otherwise noted

## ABA Project Booklets

1701	“Reflected Ceiling”
1505	“Trade”
1402	“Packed House”
1304	“Bomb Squad”
1302	“West Village Pied-a-terre”
1213	“Irish Hills House”
1212	“FitNation”
1204	“Landscape (Triptych)”
1106	“Space Frame”
1018	“Grow A Lot “
0905	“Arts Union Beacon”







A B  
A

